



This quick start guide covers installation, setup and use for

LogTag® Analyzer 3

LogTag® Analyzer is the free companion software for LogTag® logger products, used for configuration, download and data analysis. To run the software, you will need a PC running Windows 7 or later, and a free USB port. It offers a wide range of charting and reporting options as well as automation tasks for configuring, downloading and sharing data. This guide gives a brief overview of its functionality; for detailed instructions of all features please refer to the comprehensive LogTag® Analyzer User Guide, installed with the software, or invoke the built-in help function by pressing the **F1** key.

1. DOWNLOADING THE SOFTWARE

You can get your free copy of the LogTag® Analyzer software from LogTag's website. Using your browser, navigate to <https://www.logtag-recorders.com/de/support/> and click _____ to download the installer file. Please note that you will require administrator credentials for the PC on which you install the software.

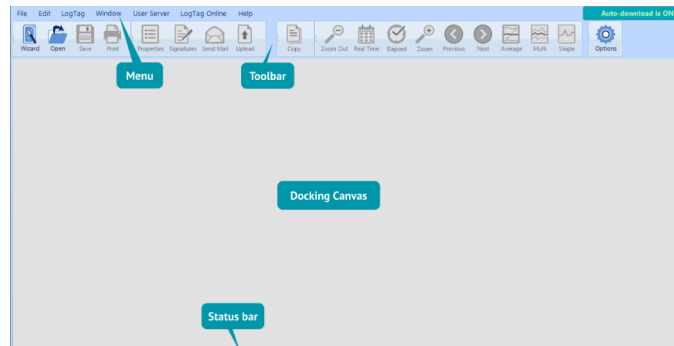
2. INSTALLATION & SETUP

Double-click the installer file you downloaded - it will be stored in your Downloads folder and called ltanalyzer_32r12.exe or similar. If you received a CD or USB Flash Drive containing the software, start it from there. Select the language, accept the license conditions and follow the on-screen instructions. When complete, a new icon will be available on the desktop and in your apps list, which you use to start LogTag® Analyzer.

If you use non-USB loggers (these have 3 silver contact pins on the rear) you require an LTI-HID interface. Connect it to a USB port on your PC. It can be left permanently connected, so you can insert loggers for configuration or download. If you use a USB logger with a built-in USB plug, connect it to a free USB port when needed.

3. USER INTERFACE

Once you have started LogTag® Analyzer, the main window will open. From here, you have access to menu and toolbar commands. More elements will become visible as soon as you open a file or download a logger.

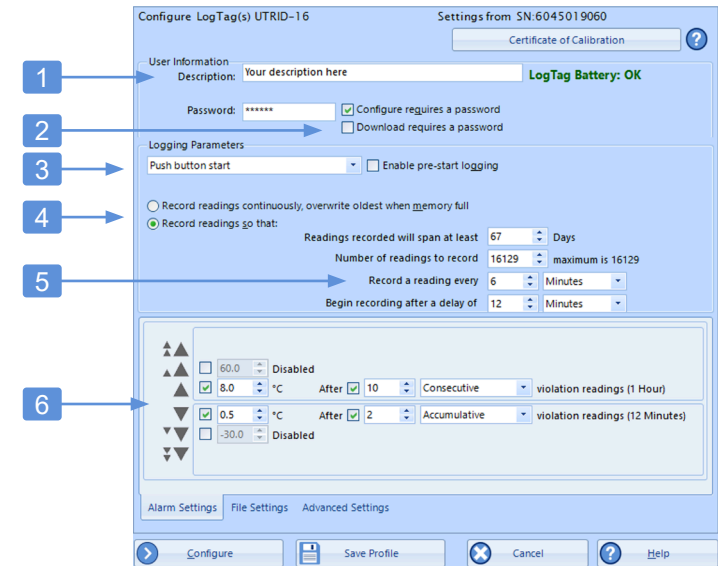


4. BASIC LOGGER CONFIGURATION

Before a logger can be used, it must be set up with the parameters required for starting and recording temperature values. It is also desirable to set alarm conditions, so you can be informed when out-of-specification temperatures were recorded.

To configure a USB logger, first plug it into a USB port on your PC. If you use an interface cradle, put the logger in the interface, upright, with the silver contacts towards the rear.

Click Configure from the LogTag menu, or press **F3**. The configuration dialogue will be shown:



The top contains general parameters, while the bottom shows several tabs with additional settings.

1. Add a description for the logger or the goods it accompanies
2. Optionally, specify a password for next configure or download.
3. Select Date/Time start, or Push button start (with optional pre-start logging).
4. Specify how long you wish to record for (with optional start delay).
5. Choose the time duration between each reading.
6. Specify the **upper** and **lower** temperature alarm trigger conditions. Add alarms as required, or change any alarms already suggested.

Depending on the logger model, other tabs may be present, which allow entering wireless settings, humidity alarms, alarms for a second recording channel, and others. Some models don't allow certain parameters to be changed (such as the vaxtag®), as they are

mandated by a certifying body.

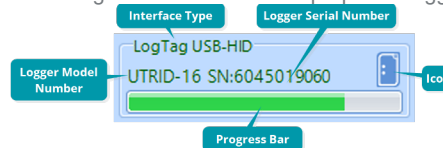
7

8

9

5. ADDITIONAL CONFIGURATION PARAMETERS

While the basic configuration is sufficient to prepare a logger for

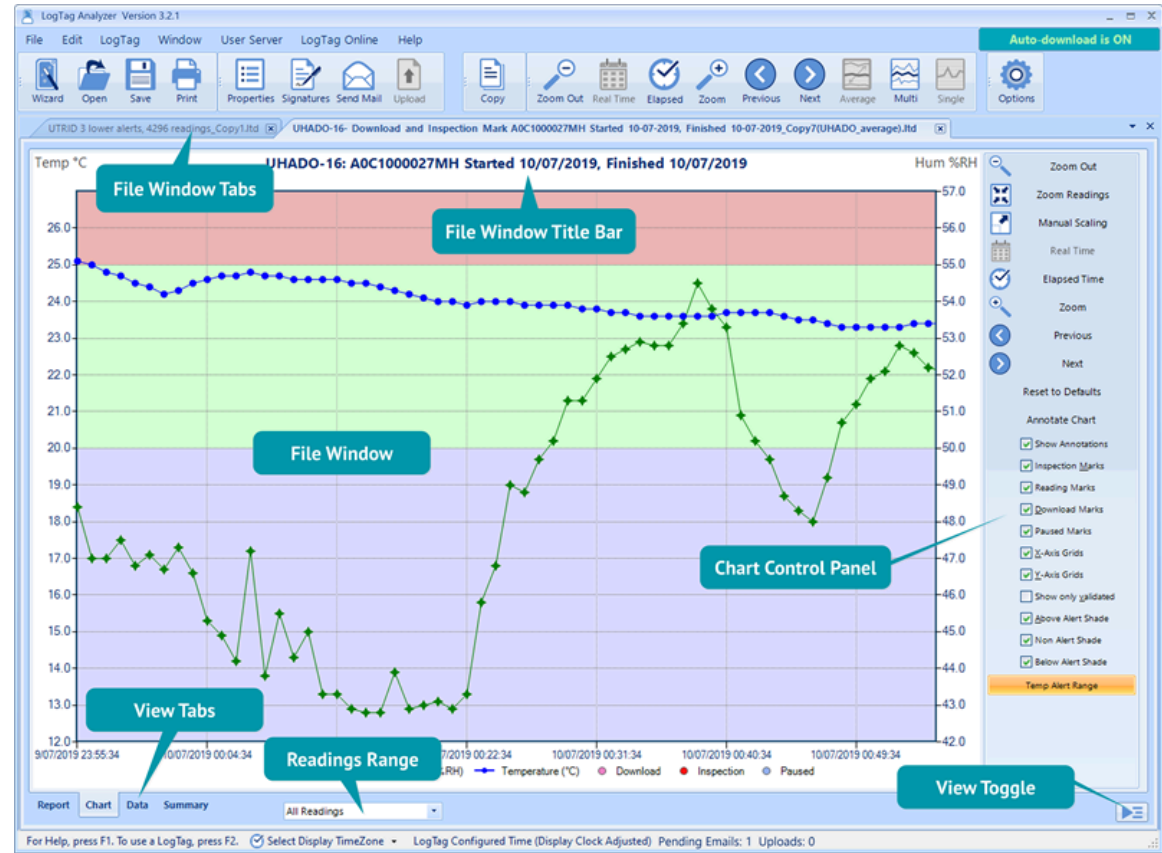


logging, you can enhance the information you receive at the end of a trip by setting some additional parameters. These are accessed by clicking the corresponding tab.

File Settings Tab

This tab is only available for USB loggers and determines the composition of the PDF file.

7. Select each element you wish to display on the PDF:
 - Enable or disable data list, alarm and grid lines



- Determine date and time formats
- Select, which on-board files should be generated
- Choose PDF temperature units, language and time zone
- Select the scaling of the chart

Advanced Settings Tab

This tab is available for loggers with a display and controls how the logger's buttons are used to control the alarms and other advanced options.

8. Complete any advanced alarm related settings
 - Define if an alarm remains shown on the display even if temperatures return to normal, and if an alarm can be cleared
 - Set the number of paused readings when a button is pressed
9. Control advanced logger settings
 - Allow stopping and resetting the logger
 - Enable the power save option

When you have entered all parameters, click Configure. The logger will now be configured with the parameters you entered. A progress bar will let you know when the configuration is finished. Remove the logger from the interface, or if it is a USB logger, unplug it and replace the cap. The logger is now ready to be started and deployed.

6. DOWNLOADING THE RESULTS

At the end of the trip, you can download the data, so it can be viewed, analyzed and shared with others. With LogTag Analyzer running, just plug the logger into a USB port or slot it into the interface cradle. The data is now automatically downloaded and stored on your PC in the Documents - My LogTag Data folder. If the auto-download function is disabled, you can also click Download from the LogTag menu or press F4.

Menu	Toolbar	
Docking Canvas	Status Bar	
File Window Tabs	File Window Title Bar	
File Window	Chart Control Panel	
View Tabs	Readings	
Range		
View Toggle		
Logger Model Number	Interface	
Type		
Interface Serial Number	Progress	
Bar		
Icon	Logger Serial Number	