

AN07 - Accessing LogTag Data with Multiple Users

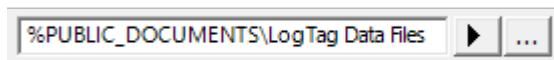
Sharing data between multiple users on a single PC can easily be set up in the **File and Folder** tab of the **Edit - Options** dialogue by entering a shared folder in the **Folder** entry field. Using a folder in **Public Documents** is the easiest way, as this is a storage location on your PC that typically each user can access.

Please note: If the Public Documents folder is not available, it will have been removed by your Network Administrator, who is the best person to set up a shared network folder and the necessary access permissions.

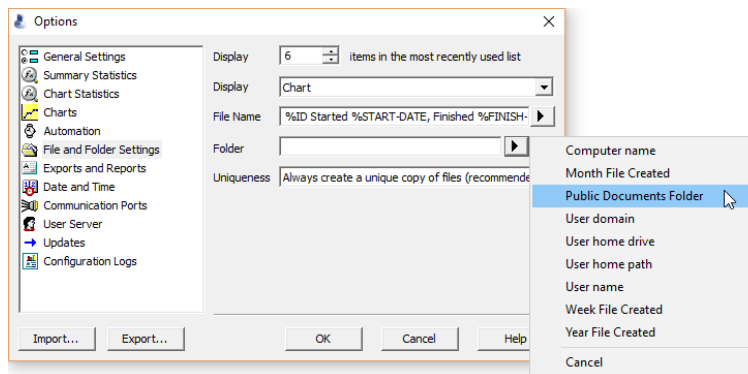
Manually setting up a shared folder

Clear the line in the **Folder** entry field in the **File and Folder** tab of the **Edit - Options** window, then do either of the following:

- type `%PUBLIC_DOCUMENTS`, followed by a `\`, followed by a folder name of your choice, such as `LogTag Data Files`.



- click on the arrow key and choose **Public Documents folder**, then add `\` and a folder name.



- Click on the ellipsis button and browse to the public folder of your choice.

Click OK to save your selection.

Similarly, you can set all log folders to this location.

If you ever get stuck, and data are not stored where they should be, please type `%APPDATA%` into a File Explorer address bar, browse to the **LogTag** folder and delete the file **User Profile.dat**. This will re-set all your settings to the default settings.

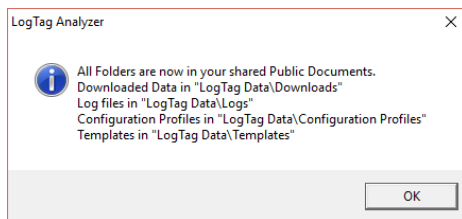
Manually importing all storage folder locations

You can set up your storage folder locations automatically with an asxml file, if your software version is greater than 2.5, release 17.

Download this file from the LogTag® Recorders website:

http://logtaganalyzer.net/download/software/analyzer/files/Public_Folders.asxml

Once downloaded, double click on the file. You will see this message:



Your folders have now been set to the shared public location.

Note: You can modify this file with a text editor and adjust the path names to suit.

Automatically setting up all storage folder locations on program start (for local PC administrators)

As a local PC administrator you can automate this process, so the folder data are imported the next time a user starts LogTag® Analyzer from their user account.

To do this:

- rename the file you downloaded in the previous step to **AutoImportSettings.asxml**.
- copy the file to the roaming profile location of any user for whom the import should take place (%APPDATA%\LogTag).

When a user next starts LogTag® Analyzer, the import file is renamed, so it will not be imported again, and all the folder locations are set as described above.

Automatically setting up all storage folders locations for new users (for local PC administrators)

You can also set this up so any new user automatically gets these storage locations. Copy the **AutoImportSettings.asxml** file to the LogTag® program directory. When you create a new account on the PC, the import will take place when the user starts LogTag® Analyzer for the first time.

Please note - none of the procedures described above will move any files from previously entered storage locations on your PC!