

AN03 - Importing Option Settings via an XML File

LogTag® Analyzer's option settings can be defined by importing a well formed XML file, either see on page 17) on program start-up, or by manually importing the file.

We recommend you edit an existing file created from an export, but you can also create a new file, following the rules below.

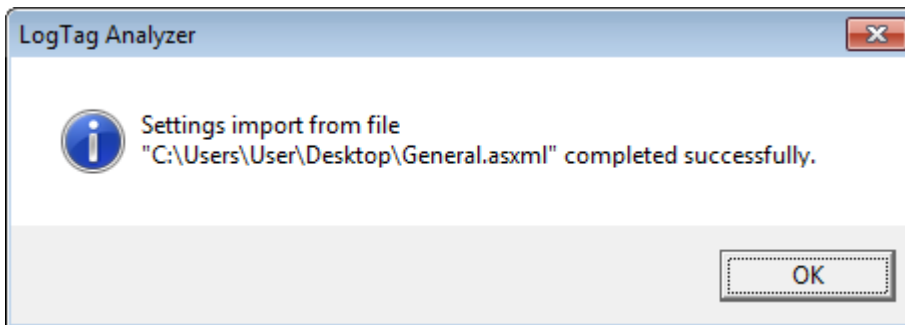
The process of importing and exporting option settings is described in the LogTag Analyzer User guide -available from the download page on LogTag® Recorders ' website- in chapter 6, **Customising the software**, in the section about **Importing and Exporting Option Settings**.

The file should have the extension *.asxml (for **Analyzer Settings XML**). Although it is possible to choose a different extension, only *.asxml is registered with the operating system, so it automatically opens with LogTag® Analyzer when clicked.

The structure of the XML file needs to comply with the following rules:

- The first line must contain the XML declaration:
`<?xml version="1.0" encoding="UTF-8" standalone="no"?>`
- All tags inside the file (except the declaration) must be properly closed and properly nested, or the XML import validation will fail.
- All settings tags are nested inside a single root element called `<analyzer_options_settings>`, which is closed on the last line of the file.
- The first child tag inside this element is the `<file_version>` element, which contains the current version of the XML file.
- Child tags largely follow the order as displayed in the dialogues of the LogTag® Analyzer options settings, starting with General settings, then summary statistics, then chart statistics and so on. You can find a detailed list of options in the section about [Available Settings](#) on page 3
- If you delete a parent tag, but the child tags remain, these will not be imported.
- Not all available tags need to be present in the file for the import to be successful. If for example you wish to only import settings to affect the appearance of the chart, the XML file only needs to contain the section about `<chart_settings>`.
- Standard block comments can be used to prevent parts of the file being imported.
- We recommend you export the desired settings to a template and edit the settings that require changing. You can also download a set of templates (a single file for each option section) from the Network Administrator download page on the LogTag® Recorders website.
- When importing these settings files, error checking at the tag level will prevent importing values not allowed for the specific field they are imported for. This error checking will, however, not prevent you from making settings that are incorrect (for example the entry of incorrect user names, passwords or folder names). We therefore recommend you check the settings by importing them into a lab installation before distributing them to production machines.

On successful import following message will be displayed.



It is possible to suppress or customise this message. To do this you need to include an `<import_success>` tag. If the tag has no children, the message will be suppressed. You can add up to 5 child tags named `<line>`. Any string inside the `<line>` tag up to 50 characters long will be displayed in the message. An empty `<line>` tag will produce a blank line in the window.

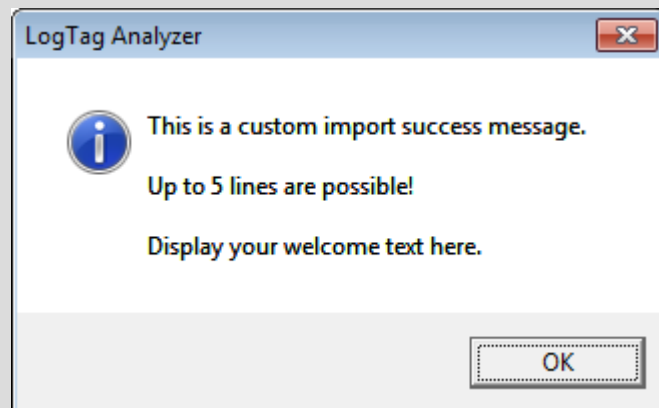
The tag will not be exported, as there is no storage mechanism for the message inside LogTag[®] Analyzer.

Example:

If a file with the following XML code is imported...

```
<?xml version="1.0" encoding="UTF-8" standalone="no"?>
<analyzer_options_settings>
  <file_version>1</file_version>
  <import_success>
    <line>This is a custom import success message.</line>
    <line/>
    <line>Up to 5 lines are possible!</line>
    <line/>
    <line>Display your welcome text here.</line>
  </import_success>
  <general_settings>
    <temperature_unit>Celsius</temperature_unit>
    <language>409</language>
  </general_settings>
</analyzer_options_settings>
```

...this message is displayed upon successful import:



Editing *.asxml files

Although you can edit *.asxml files with a standard text editor, we recommend using an XML tree editor, making it easier to identify the tags.

Two popular editors are

- [XML Notepad 2007](#) published by Microsoft
- [XML Tree Edit](#) available from Sourceforge

Both present the asxml file in a way that makes them easy to view and change. Please note however that when saving both editors may add a *.xml extension to the end of the file name.

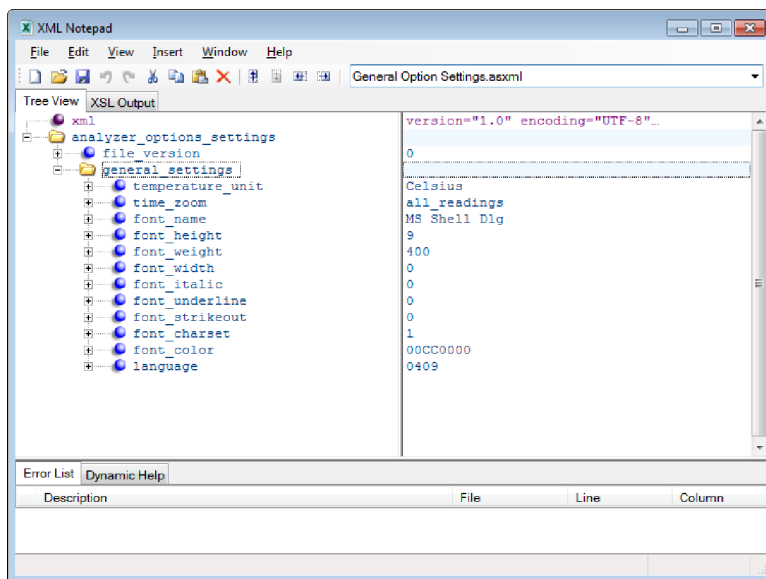


Figure 1: Microsoft's XML Notepad 2007

Password considerations

When exporting a settings *.asxml file, all passwords (for example email and ftp passwords) are stored in an encrypted form in the <password_encrypted> tag.

To avoid distributing clear text passwords, administrators can import a settings file into Analyzer containing the clear text password, then export these settings again to a new *.asxml file and either copy/paste the encrypted password or use the new file as the basis for the distributed import file.

Clear text password using the <password> tag can also be distributed, but typically company's security procedures don't allow this.

Available Settings

Following tables contain the settings available for import/export. Their meaning is explained only if the settings are not already detailed in the LogTag® Analyzer User Guide, in the section about [Customising the software](#).

Please note where colours are referenced, the American spelling **color** is used. The hex values for colours are in the form of 4 octets, rather than the typical 3, the first octet being 00, the remaining are the BGR values (please note, not RGB!).

The tag syntax and all available settings are in English and must remain in English for all languages.

General Settings

The tag syntax is <general_settings>.

Table 1: General Settings

Setting	Accepted values	Notes
temperature_unit	"Celsius", "Fahrenheit" "Kelvin"	
time_zoom	"all_readings" "start_first_mark" "last_mark_end"	
font_name	Valid font name	
font_height	1-72pt	
font_weight	long integer	
font_width	long integer	
font_italic	0 (attribute not set) 1 (attribute set)	
font_underline	0 (attribute not set) 1 (attribute set)	
font_strikeout	0 (attribute not set) 1 (attribute set)	
font_charset	Byte value, values as per definition in wingdi.h: ANSI_CHARSET 0 DEFAULT_CHARSET 1 SYMBOL_CHARSET 2 MAC_CHARSET 77 SHIFTJIS_CHARSET 128 HANGEUL_CHARSET 129 HANGUL_CHARSET 129 GB2312_CHARSET 134 CHINESEBIG5_CHARSET 136 JOHAB_CHARSET 130 HEBREW_CHARSET 177 ARABIC_CHARSET 178 GREEK_CHARSET 161 TURKISH_CHARSET 162 VIETNAMESE_CHARSET 163 BALTIC_CHARSET 186 THAI_CHARSET 222 EASTEUROPE_CHARSET 238 RUSSIAN_CHARSET 204	

Setting	Accepted values	Notes
	OEM_CHARSET 255	
font_color	Hex RGB value 00bbgrr	Please note US spelling
language	Hexadecimal value corresponding to the Windows language identifier Chinese (Simplified) 404 Chinese (Traditional) 804 Czech 405 Danish 406 Dutch 413 English (UK) 809 English US 409 French 40C German 407 Greek 408 Italian 410 Norwegian 414 Polish 415 Portuguese (Brazil) 416 Portuguese 816 Romanian 418 Russian 419 Spanish 40A Swedish 41D Turkish 41F	Please note due to an earlier issue the language identifiers for Chinese Traditional and Chinese simplified have been transposed from the standard Windows language identifiers.

Summary Statistics Settings

Please note most settings are shared between this section and the chart statistics section. In case of a conflict the setting imported last overwrites the earlier setting.

The tag syntax is <summary_statistics>.

Table 2: Statistics Settings

Setting	Accepted values	Notes
elapsed_time	0: display date/time, 1: display elapsed time	
reading_range	0: don't display 1: display	
average_reading	0: don't display 1: display	
average_decimal_places	1, 2 or 3	The same average parameter settings apply to chart and summary statistics
standard_deviation	0: don't display 1: display	
stdev_decimal_places	1, 2 or 3	The same standard deviation parameter settings apply to chart and summary statistics
stdev_formula	"sample_based" or "population_based"	
deg_minutes_below	0: don't display	

Setting	Accepted values	Notes
	1: display	
deg_minutes_above	0: don't display 1: display	
mean_kinetic_temperature	0: don't display 1: display	
mkt_default	0: use default delta H value 1: use delta H specified	The same MKT setting applies to chart and summary statistics
mkt_delta_h	-9999.999 to +9999.999	up to 3 decimal places
mkt_use_logger_delta_h	1: yes 0: no	
time_below_lower	0: don't display 1: display	
time_above_upper	0: don't display 1: display	
time_within	0: don't display 1: display	

Chart Statistics

The tag syntax is <chart_statistics>.

Table 3: Chart Statistics

Setting	Accepted values	Notes
elapsed_time	0: display date/time, 1: display elapsed time	
reading_range	0: don't display 1: display	
average_reading	0: don't display 1: display	
average_decimal_places	1, 2 or 3	The same average parameter settings apply to chart and summary statistics
standard_deviation	0: don't display 1: display	
stdev_decimal_places	1, 2 or 3	The same standard deviation parameter settings apply to chart and summary statistics
stdev_formula	"sample_based" or "population_based"	
deg_minutes_below		
deg_minutes_above	0: don't display 1: display	
mean_kinetic_temperature	0: don't display 1: display	
mkt_default	0: use default delta H value 1: use delta H specified	The same mkt setting applies to chart and summary statistics, the last setting in the file will override a previous setting
mkt_delta_h	-9999.999 to +9999.999	up to 3 decimal places
mkt_use_logger_delta_h	1: yes 0: no	
time_below_lower	0: don't display	

Setting	Accepted values	Notes
	1: display	
time_above_upper	0: don't display 1: display	
time_within	0: don't display 1: display	

Chart Settings

A number of chart settings have child tags.

The tag syntax is <chart_settings>.

Table 4: Chart Settings

Setting	Child	Accepted values	Notes
chart_heading		string	use own text, can add variables as listed in the LogTag® AnalyzerUser Guide
temperature_readings	color	Hex RGB value 00bbggrr	
	line_style	"none", "solid", "dash", "dot", "dash_dot", "dash_dot_dot"	
	line_thickness	1 - 15	
temperature_markers	display	0: don't display 1: display	
	color	Hex RGB value 00bbggrr	
	style	"Circle", "Diamond", "Hexagram", "Pentagram", "Square", "Star", "Triangle", "HourGlass", "BowTie"	
humidity_readings	size	1 - 15	
	color	Hex RGB value 00bbggrr	
	line_style	"none", "solid", "dash", "dot", "dash_dot", "dash_dot_dot"	
humidity_markers	display	0: don't display 1: display	
	line_thickness	1 - 15	
	color	Hex RGB value 00bbggrr	
download_marks	display	0: don't display 1: display	
	style	"Circle", "Diamond", "Hexagram", "Pentagram", "Square", "Star", "Triangle", "HourGlass", "BowTie"	
	size	1 - 15	
	color	Hex RGB value 00bbggrr	
inspection_marks	display	0: don't display 1: display	
	style	"Circle", "Diamond", "Hexagram", "Pentagram", "Square", "Star", "Triangle", "HourGlass", "BowTie"	

Setting	Child	Accepted values	Notes
	size	1 – 15	
	color	Hex RGB value 00bbggrr	
above_alert_region	display	0: don't display 1: display	
	style	"Circle", "Diamond", "Hexagram", "Pentagram", "Square", "Star", "Triangle", "HourGlass", "BowTie"	
	size	1 – 15	
	color	Hex RGB value 00bbggrr	
within_alert_region	display	0: don't display 1: display	
	line_style	"none", "solid", "solid_thick", "dash", "dot", "dash_dot", "dash_ dot_dot"	
	color	Hex RGB value 00bbggrr	
below_alert_region	display	0: don't display 1: display	
	line_style	"none", "solid", "solid_thick", "dash", "dot", "dash_dot", "dash_ dot_dot"	
	color	Hex RGB value 00bbggrr	
multi_chart_shade	display	0: don't display 1: display	
	color	Hex RGB value 00bbggrr	
x_axis_grids	display	0: don't display 1: display	
y_axis_grids	display	0: don't display 1: display	
non_validated	display	0: don't display 1: display	
	display_ differently	0: yes, 1: no	
	style	"Circle", "Diamond", "Hexagram", "Pentagram", "Square", "Star", "Triangle", "HourGlass", "BowTie"	
	size	1 - 15	
	color	Hex RGB value 00bbggrr	
readings_beyond_ specification		0: don't display 1: display	
annotations		0: don't display 1: display	
elapsed_time		0: don't display 1: display	
y_axis_alert_shade		"Humidity", "Temperature"	
default_zoom	Attribute type=""	valid attributes are "readings_ range", "sensor_range", "custom_ range"	
	temperature_unit	"Celsius", "Fahrenheit", "Kelvin"	settings for custom range
	temperature_from	-100.0 to 100.0	one decimal point

Setting	Child	Accepted values	Notes
	temperature_to	-100.0 to 100.0	one decimal point
	humidity_from	0 to 100.0	one decimal point
	humidity_to	0 to 100.0	one decimal point

Automation Settings

The tag syntax is <automation_settings>.

When this section is exported, FTP and SMTP settings are also exported.

Table 5: Automation Settings

Setting	Accepted values	Notes
auto_download	0: false 1: true	
auto_reconfigure	0: false 1: true	
auto_display	0: false 1: true	
display_only_latest	0: false 1: true	
auto_save_readonly	0: false 1: true	
auto_email	0: false 1: true	settings made in the next section
manual_email	0: false 1: true	settings made in the next section
auto_ftp	0: false 1: true	settings made in the section after next
manual_ftp	0: false 1: true	settings made in the section after next

SMTP Settings

A number of SMTP settings have child tags.

Please also see recommendations in the section about [Password considerations](#) on page 3.

The tag syntax is <smtp_settings>.

Table 6: SMTP settings

Setting	Child	Accepted values	Notes
server		String	no enclosing double quotes
port_number		0 to 65535	
use_ssl		1: yes 0: no	
reconnect_interval		1 to 65535	in minutes
reconnect_retries		0 to 65535	

Setting	Child	Accepted values	Notes
disconnect_idle_time		0 to 65535	in minutes
log_uploads		0: false 1: true	
log_folder		String	no enclosing double quotes, even for folders with spaces
log_connection_errors		0: false 1: true	
use_name_and_password		0: false 1: true	
username		String	
password		String	clear text password, for importing only
password_encrypted		String	encrypted password; where possible use this for distribution. Generated when exported.
sender_name		String	
sender_email		String	
email_recipients	recipient	Attributes: name = String, email_address = String	each recipient in separate self closing tag with the attributes
attachment_file_formats	ltd	0: false 1: true	
	text_tab	0: false 1: true	
	text_mac	0: false 1: true	
	csv	0: false 1: true	
	html	0: false 1: true	
	pdf	0: false 1: true	
subject_line		String	use own text, can add variables as listed in the LogTag® Analyzer User Guide
use_outbox		0: false 1: true	

FTP settings

A number of FTP settings have child tags.

Please also see recommendations for dealing with passwords.

The tag syntax is <ftp_settings>.

Table 7: FTP settings

Setting	Child	Accepted values	Notes
server		String	
port_number		0 to 65535	
username		String	
password		String	
password_encrypted		String	encrypted password; where possible use this for distribution. Generated when exported.
security_protocol		"none", "SSL", "TLS1"	
proxy	Attribute settings=" "	values: "proxy_default" "proxy_custom"	
	proxy_server	String	
	proxy_port_number	0 to 65535	
	use_username_password	0: false 1: true	
	proxy_username	String	
	proxy_password	String	clear text password, for importing only
	proxy_password_encrypted	String	encrypted password; where possible use this for distribution. Generated when exported.
	proxy_method	"auto_detect", "site", "user_site", "user_login", "user_pass_acct", "open_site", "proxy_username_site", "site_user", "user_proxy_username_site", "socks_v4", "socks_v5"	
reconnect_interval		1 to 65535	in minutes
reconnect_retries		0 to 65535	
disconnect_idle_time		0 to 65535	in minutes
log_uploads		0: false 1: true	
log_folder		String	
log_connection_errors		0: false 1: true	
use_outbox		0: false 1: true	
remote_folder		String	
create_remote_folder		0: false 1: true	
upload_file_formats	ltd	0: false 1: true	
	text_tab	0: false 1: true	

Setting	Child	Accepted values	Notes
	text_mac	0: false 1: true	
	csv	0: false 1: true	
	html	0: false 1: true	
	pdf	0: false 1: true	

File and Folder Settings

The tag syntax is <file_folder_settings>.

Table 8: File and Folder Settings

Setting	Accepted values	Notes
number_mru_files	0 to 16	
initial_display	"Chart", "Data", "Report", "Summary"	
file_name	String with placeholder elements	use own text, can add variables as listed in the LogTag® AnalyzerUser Guide
folder	String with placeholder elements, max. length: 260 characters	use own text, can add variables as listed in the LogTag® AnalyzerUser Guide
template_folder	String with placeholder elements, max. length: 260 characters This tag will not be exported.	this folder is used to store the logo file.
file_name_uniqueness	"unique_filename", "overwrite_Existing", "prompt_if_exists"	

The string used for file name, folder name and template folder can contain the same placeholder elements that are present in the option settings.

Examples:

Following <folder> tag will save all LogTag data files in the user's **Documents** folder, in a subfolder called **My LogTag Data**.

```
<folder>%HOMEDRIVE%HOMEPATH\Documents\My LogTag Data</folder>
```

Following <folder> tag will save all LogTag data files in the **Public Documents** folder, in a subfolder called **LogTag Data**.

```
<folder>%PUBLIC_DOCUMENTS\LogTag Data</folder>
```

File Export Settings

A number of file export settings have child tags.

The tag syntax is <file_export_settings>.

Table 9: File Export Settings

Setting	Child	Child	Accepted values	Notes
export_formats	text_tab	Attribute "enabled"	values "on" or "off"	
		include_prestart	1: yes 0: no	
		column_headings	1: included 0: excluded	
		summary	1: yes 0: no	
		readings_beyond_spec_blank	1: yes 0: no	
		show_elapsed_time	1: yes 0: no	either this or the next entry must be '1'
		show_date_time	1: yes 0: no	
	text_mac	Attribute "enabled"	values "on" or "off"	
		include_prestart	1: yes 0: no	
		column_headings	1: included 0: excluded	
		summary	1: yes 0: no	
		readings_beyond_spec_blank	1: yes 0: no	
		show_elapsed_time	1: yes 0: no	either this or the next entry must be '1'
		show_date_time	1: yes 0: no	
	csv	Attribute "enabled"	values "on" or "off"	
		include_prestart	1: yes 0: no	
		column_headings	1: included 0: excluded	
		summary	1: yes 0: no	
		readings_beyond_spec_blank	1: yes 0: no	
		show_elapsed_time	1: yes 0: no	either this or the next entry must be '1'
		show_date_time	1: yes 0: no	
		custom_separator	attribute separator="C"	C is one single character
	html	Attribute "enabled"	values "on" or "off"	
		include_prestart	1: yes 0: no	
		column_headings	1: included 0: excluded	

Setting	Child	Child	Accepted values	Notes
		summary	1: yes 0: no	
		readings_beyond_spec_blank	1: yes 0: no	
		show_elapsed_time	1: yes 0: no	either this or the next entry must be '1'
		show_date_time	1: yes 0: no	
	pdf	Attribute "enabled"	values "on" or "off"	
		day_summary	1: included 0: excluded	
		readings_beyond_spec_blank	1: yes 0: no	
		prestart_chart	1: included 0: excluded	
		prestart_data	1: included 0: excluded	
		prestart_summary	1: included 0: excluded	
		chart_chart	1: included 0: excluded	
		chart_data	1: included 0: excluded	
		chart_summary	1: included 0: excluded	
		all_chart	1: included 0: excluded	
		all_data	1: included 0: excluded	
		all_summary	1: included 0: excluded	
		paper_size	"letter", "legal", "a3", "a4", "b4", "b5", "executive"	
		paper_orientation	"portrait", "landscape"	
send_mail_formats		ltd	1: included 0: excluded	
		text_tab	1: included 0: excluded	
		text_mac	1: included 0: excluded	
		csv	1: included 0: excluded	
		html	1: included 0: excluded	
		pdf	1: included 0: excluded	

Date and Time settings

The tag syntax is <date_time_settings>.

Table 10: Date and Time settings

Setting	Accepted values	Notes
date_format	short long custom: Attribute format="String"	String contains date format string as described in LogTag [®] Analyzer User Guide
time_format	default custom: Attribute format="String"	String contains time format string as described in LogTag [®] Analyzer User Guide
display_time_zone	"download", "configuration", "UTC", "display_configuration", "display_download_date"	

Communication Settings

A number of communication settings have child tags.

The tag syntax is <communication_settings>.

Table 11: Communication Settings

Setting	Child	Accepted values	Notes
disable_all_serial		1: yes 0: no	
The following settings are only included if the COM port settings are selected for export.			
serial_port_detection		"automatic", "manual"	
max_com_port_number		1 to 255, default value: 9	determines up to which COM port number the software looks for interfaces
com_ports	COMx	List of self closing tags with numbered COM ports that are enabled with x being the port number.	This list is only included if the detection method is "manual"

User Server Settings

The tag syntax is <user_server_settings>.

User server settings can only be imported when a valid user is logged on. That user can only import settings for which change permissions are granted.

The recommended distribution for user settings when User Server is deployed is via Group Policy using the [User Profile.dat](#) file and registry entries as described in [Connecting to User Server](#) on page 1.

The XML method can be used to connect a PC to a User Server who has not been connected previously. Please also see the methods described in [Automatically Importing Options via XML](#) on page 17

Table 12: User Server Settings

Setting	Accepted values	Notes
connection	"server_on_workstation", "server_name", "server_ip", "no_connection".	"no connection" will be exported if no User Server connection defined, but importing this setting won't disconnect from User Server on import
server_name	String	
server_ip	String	
tcp_port_number	0 to 65535	
verify_server_connection	0: false 1: true	recommended setting is 1. Using 0 will create the connection, regardless of whether the server is running or not. Use this with caution.

Updates Settings

The tag syntax is <updates_settings>.

Table 13: Updates Settings

Setting	Accepted values	Notes
enable_check	1: enabled 0: disabled	
check_interval	1 to 365	days
auto_download_updates	1: enabled 0: disabled	

Configuration Log Settings

If configuration logging is disabled, no columns are included in the *.asxml file, if logging is enabled, all columns are included with the "enabled" attribute indicating whether the columns are used or not. The order of the tags starting with <column_...> determines the order in which the export file columns are written to the log file.

The tag syntax is <configuration_logs_settings>.

Table 14: Configuration Log Settings

Setting	Accepted values	Notes
enable_logging	1: enabled 0: disabled	
log_folder	String with placeholder elements, max. length: 260 characters	
field_separator	String, length 1 to 16 characters	
column_date	Attribute enabled="on": column included Attribute enabled="off": column not included	switched via tag attribute
column_time	Attribute enabled="on": column included Attribute enabled="off": column not included	switched via tag attribute
column_logger_id	Attribute enabled="on": column included Attribute enabled="off": column not included	switched via tag attribute

Setting	Accepted values	Notes
column_user_id	Attribute enabled="on": column included Attribute enabled="off": column not included	switched via tag attribute
column_enable_prestart	Attribute enabled="on": column included Attribute enabled="off": column not included	switched via tag attribute
column_wrap_memory	Attribute enabled="on": column included Attribute enabled="off": column not included	switched via tag attribute
column_start_method	Attribute enabled="on": column included Attribute enabled="off": column not included	switched via tag attribute
column_log_duration	Attribute enabled="on": column included Attribute enabled="off": column not included	switched via tag attribute
column_log_interval	Attribute enabled="on": column included Attribute enabled="off": column not included	switched via tag attribute
column_log_count	Attribute enabled="on": column included Attribute enabled="off": column not included	switched via tag attribute
column_upper_alerts	Attribute enabled="on": column included Attribute enabled="off": column not included	switched via tag attribute
column_lower_alerts	Attribute enabled="on": column included Attribute enabled="off": column not included	switched via tag attribute
column_consec_alert_delay	Attribute enabled="on": column included Attribute enabled="off": column not included	switched via tag attribute
column_non_consec_alert_delay	Attribute enabled="on": column included Attribute enabled="off": column not included	switched via tag attribute
column_latch_alert	Attribute enabled="on": column included Attribute enabled="off": column not included	switched via tag attribute
column_clear_alert	Attribute enabled="on": column included Attribute enabled="off": column not included	switched via tag attribute
column_configure_password	Attribute enabled="on": column included Attribute enabled="off": column not included	switched via tag attribute
column_download_password	Attribute enabled="on": column included Attribute enabled="off": column not included	switched via tag attribute

Automatically Importing Options via XML

You can set pre-defined options during a one-off automatic import when LogTag® Analyzer starts. To do this, you need to create an XML settings file called [AutoImportSettings.aspxml](#) using the previously described techniques, and save it to one or both of the following locations:

- the roaming profile location of any user for whom the import should take place (%APPDATA%\LogTag).
- the LogTag® Analyzer Program folder, where the executable resides. This is typically the \Program Files (x86)\LogTag Recorders LTD\LogTag® Analyzer or the \Program Files\LogTag Recorders LTD\LogTag® Analyzer folder, depending on OS, but it can also be a user selected folder.

Every time LogTag® Analyzer starts, it will execute the following tasks, in the order listed:

1. Check the roaming profile location of the currently logged in user and try to locate the **User Profile.dat** file. If it finds this file, it will load the settings contained in the file.
2. Check the same location for an **AutoImportSettings.aspxml** file.
If this file is present, its contents will be imported into the current configuration and overwrite the settings of the **User Profile.dat** file. If no **User Profile.dat** file is present, it will first be created with default settings, then the new settings applied. Those settings not present in the **AutoImportSettings.aspxml** file remain unchanged.
Once imported, the **AutoImportSettings.aspxml** file will be renamed to **AutoImportSettings.aspxml.complete**, and hence not imported again when LogTag® Analyzer starts next.
3. If neither a **User Profile.dat**, nor an **AutoImportSettings.aspxml** file is found in the roaming profile location, LogTag® Analyzer will check in the folder where its executable is stored for an **AutoImportSettings.aspxml** file.
If this file is present, a new **User Profile.dat** file will be created in the current user's roaming profile location with default settings, then the contents of the **AutoImportSettings.aspxml** file will be imported and overwrite the settings of the **User Profile.dat** file. Again, settings not present in the **AutoImportSettings.aspxml** file remain unchanged.
When the import is complete, the **AutoImportSettings.aspxml** will not be renamed. This allows the file to be imported by multiple users on the same PC, but on the next start of LogTag® Analyzer it will not be imported, as the roaming profile location now contains a **User Profile.dat** file. Only when this file is deleted, will the import be repeated.

When you exit LogTag® Analyzer, any changes made as a result of importing option settings as are written to the **User Profile.dat** and become persistent, until they are either changed again by the User, another *.aspxml file is imported or the **User Profile.dat** file is deleted from the roaming profile.

The **AutoImportSettings.aspxml** file must contain only valid settings. None of the settings in the **AutoImportSettings.aspxml** file will be imported, if even a single invalid tag is found in the file. If no **User Profile.dat** file is present, but the import fails, it will be created with default settings when you exit LogTag® Analyzer.

The previously used LogTag® Settings Editor for FTP and SMTP settings is no longer supported.