

LogTag Analyzer does not exist as a native application for any of the Apple Mac operating systems. To be able to use LogTag Analyzer 3 with an Apple Mac OS you will either need to use a dual boot configuration through Bootcamp or a virtual machine program such as VMware Fusion, Parallel Desktop or Virtual Box.

This document acts as a set-up guide on a way to run LogTag Analyzer 3 on a MacOS device through a virtual machine.

The following instructions have been tested with:

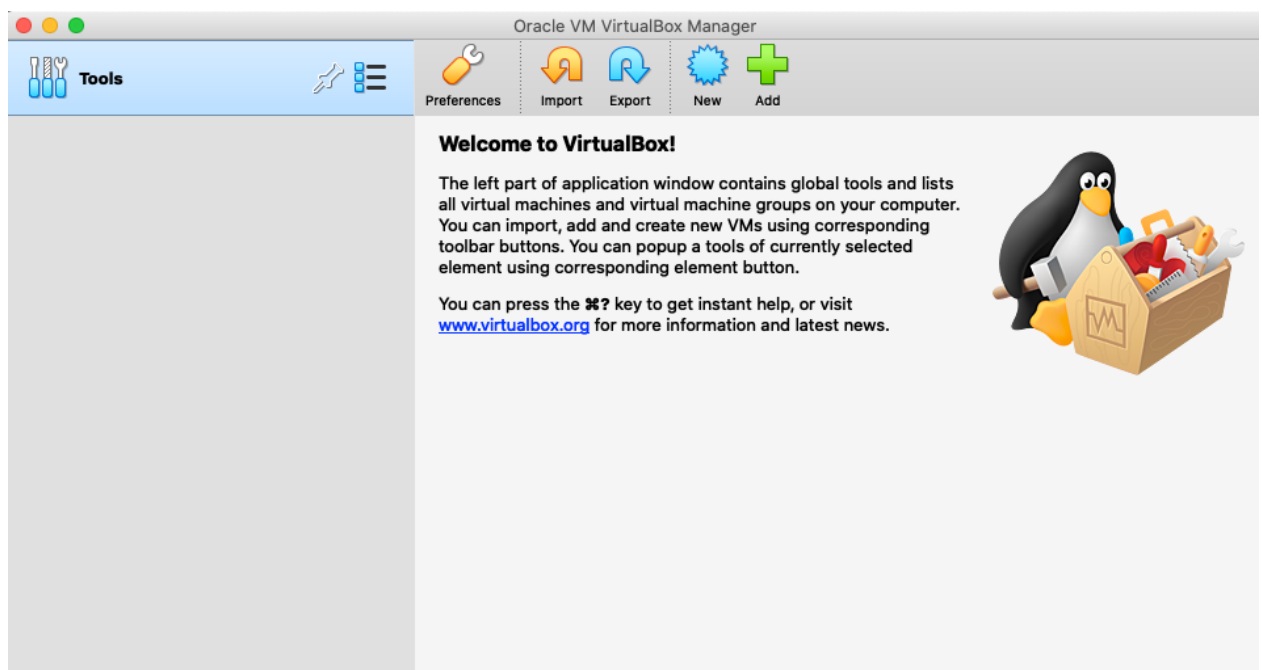
- LogTag Analyzer 3 (3.1.11)
- Mac mini (Late 2014 model) 2.6Ghz edition
- Virtual Box running windows 10

Instructions for other versions will be similar. You should also familiarise yourself with the specific system requirements for the installation of Virtual Box.

Note: LogTag Analyzer is not designed for operation on Mac operating systems, and it is not possible to test every function. Use of LogTag Analyzer on Mac Systems is therefore not warranted by LogTag Recorders.

## Set-up Guide

1. If not already installed, download and install VirtualBox offered by Oracle. Please note although VirtualBox is offered as free for personal use, commercial use requires a purchased version. Simply download the VirtualBox installer from VirtualBox's website. After clicking download, it will redirect you to a downloads page, you can download the platform package installer under the "OS X hosts". After installation, run the installer and follow the download instructions given by VirtualBox.
2. Download windows 10: You can download an ISO image of Windows 10 from Microsoft's website.
3. Create your virtual machine: Launch VirtualBox and create a new operating system. You can do this by clicking "New" at the top bar.



You may now select the name and operating system you desire for your virtual device. We have used Windows 10 (64-bit).

### Name and operating system

Please choose a descriptive name and destination folder for the new virtual machine and select the type of operating system you intend to install on it. The name you choose will be used throughout VirtualBox to identify this machine.

Name:

Machine Folder:

Type:

Version:

Select your memory size.

### Memory size

Select the amount of memory (RAM) in megabytes to be allocated to the virtual machine.

The recommended memory size is **2048 MB**.

MB

4 MB 8192 MB

Create a virtual hard disk.

### Hard disk

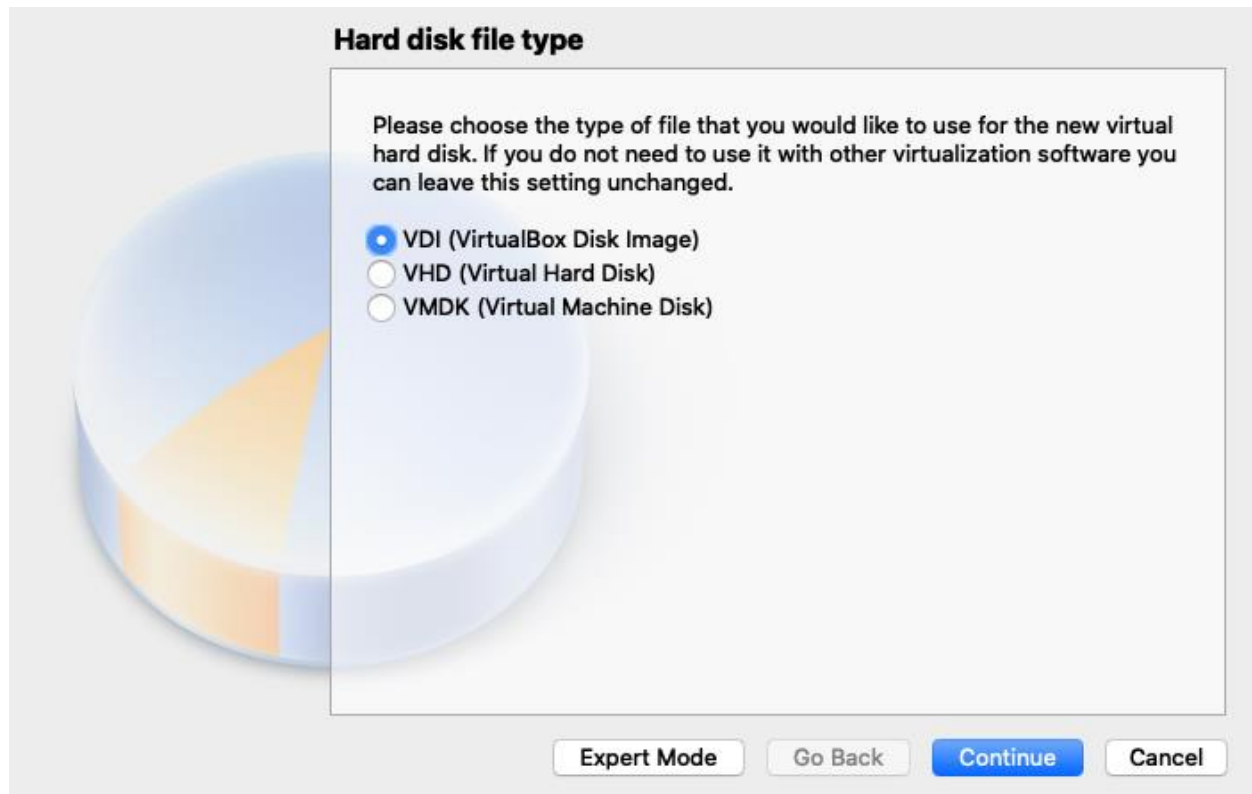
If you wish you can add a virtual hard disk to the new machine. You can either create a new hard disk file or select one from the list or from another location using the folder icon.

If you need a more complex storage set-up you can skip this step and make the changes to the machine settings once the machine is created.

The recommended size of the hard disk is **50.00 GB**.

Do not add a virtual hard disk  
 Create a virtual hard disk now  
 Use an existing virtual hard disk file

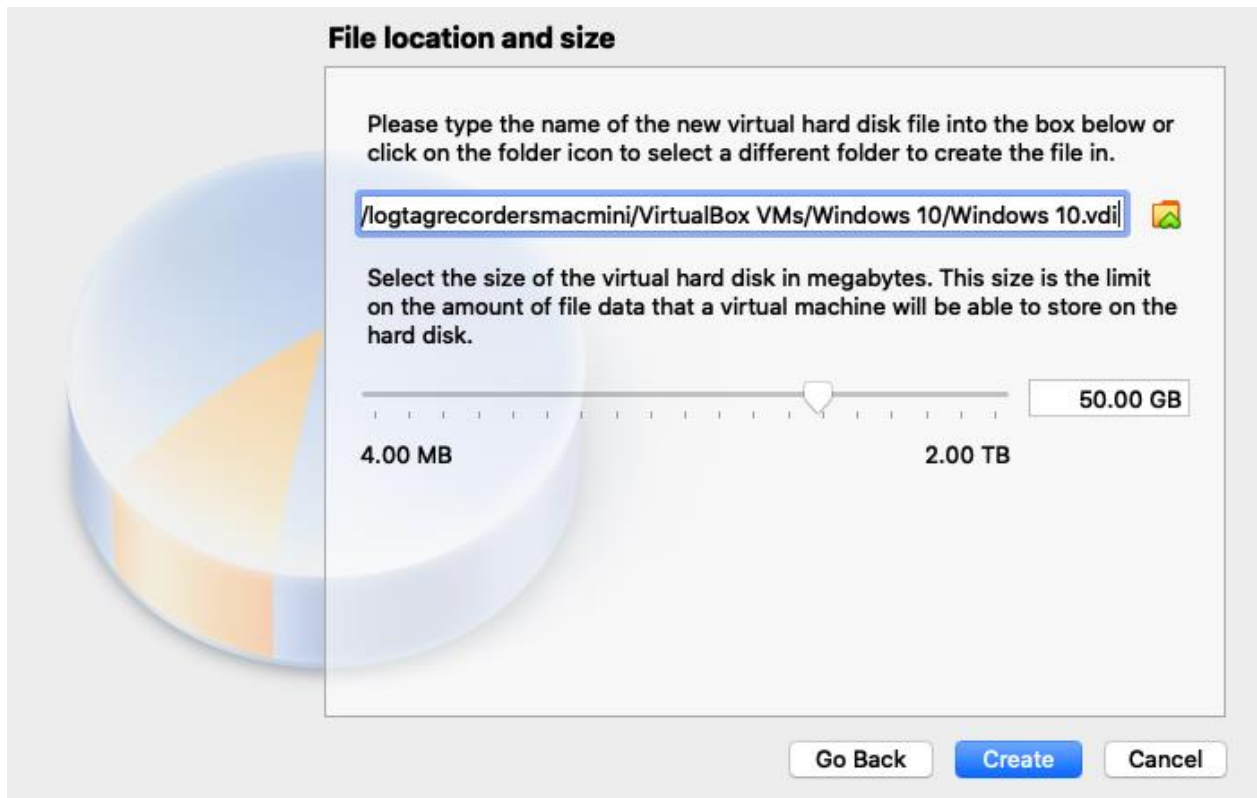
Use a VirtualBox Disk Image.



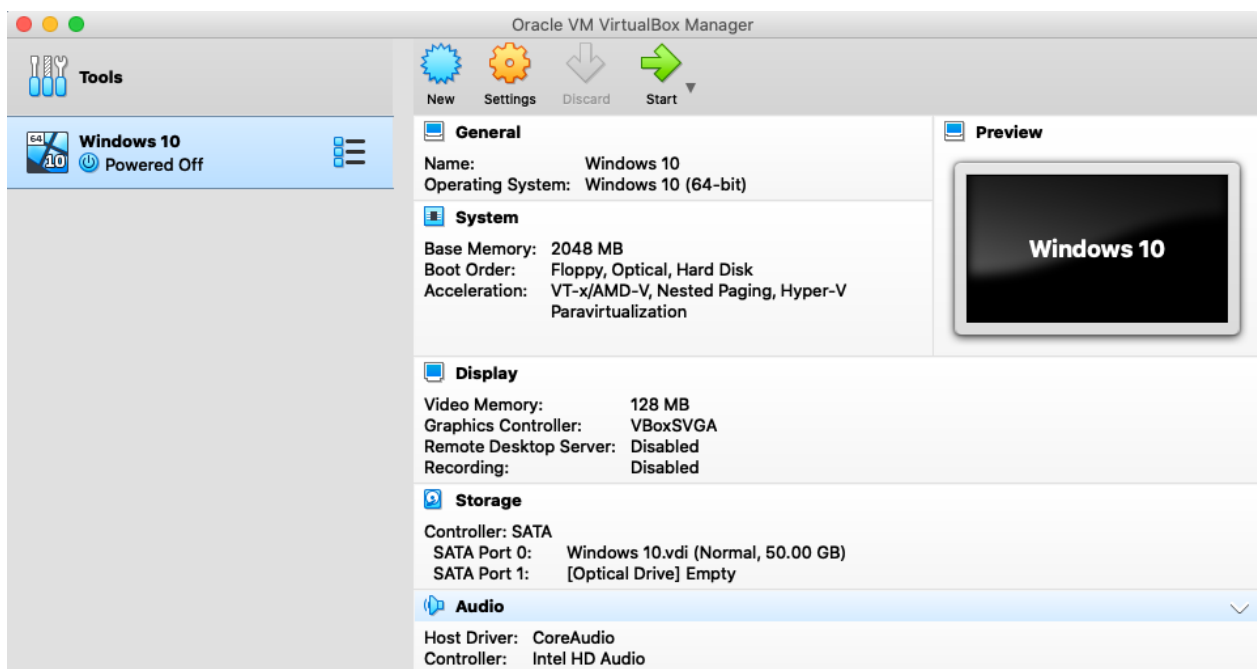
Make your hard disk dynamically allocated.



Then select your file location and size.



At this point you should be returned to VirtualBox's original page with a Windows 10 device.



We can now start our virtual device by clicking the green start arrow located at the top of the window.

You will be prompted to select a virtual optical disk file or physical optical drive with

Windows 10 on it.

Use the file selector to select your .iso file, this will be used to install Windows 10 on the virtual device.



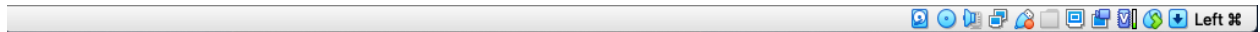
You can then follow the set-up instructions for Windows 10.

You will need a valid product key to activate windows.

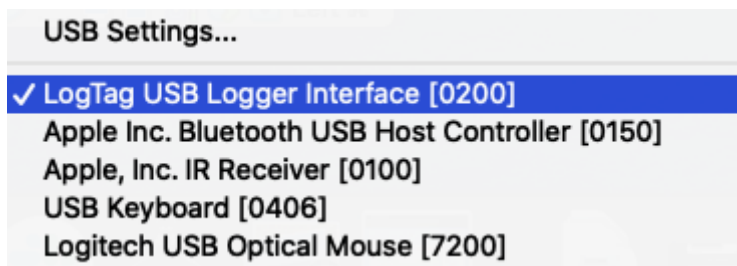
You should select the “Custom: Install Windows only (advanced)” option for your virtual device.

4. Install LogTag Analyzer 3 on your new virtual device. This can be downloaded from LogTag Recorders’ official website.

You will most likely need to give access to USB inputs to your virtual device. This can be done by selecting the USB icon found at the bottom of the VirtualBox window (that has your virtual device running). The USB icon is the 5th icon from the left on the image below.



Click this icon and select your desired USB input device to set-up.



After Windows sets up your USB device, LogTag Analyzer 3 will be able to access the USB device.

At this point you will have a working Windows virtual device that can use LogTag Analyzer 3.

## Limitations:

There are some functions which result in unexpected behaviour due to the fact that the application is not running natively.

- The “send mail” function requires an email program to be set up in the Windows OS.